

Community Schools




2024-2025

Dr. Karmin Williams

- Chemist
- High School Math/Science Teacher
- Alternative School Administrator
- Varsity Distance Coach
- Union Lead
- Faubion PK-8 Principal
- Director of Community Schools





Community Schools leverage family & community partnerships and resources to become hubs of the community, responding to both the community's needs and maximizing its assets. By becoming truly responsive to the community, the school is better situated to support a whole-child model of education, providing opportunities for all children to meet & exceed their potential.

The Community School model is **NOT** a program, it is a way of being.

We aim to make Public School, *Public*

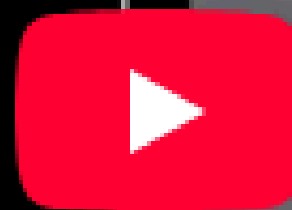




Community Schools: Streetlights and Sidewalks



Share



Watch on  YouTube

Rigorous, community-connected classroom instruction

Teaching and learning in the school integrates high-quality instruction with demanding (or rigorous) content and real-world skill-building and learning opportunities. The curriculum reflects the local community and students' identities, cultures, and experiences and provides opportunities for students to engage in meaningful inquiry-based learning and problem-solving.



Seamless system where academic support, enrichment activities, and skill development are interconnected

Access to technology, arts, & critical thinking opportunities that are often overlooked in traditional systems

Expanded and enriched learning opportunities

Before- and after-school, weekend, and summer programs provide expanded time, enhanced staffing, and enriched opportunities for learning and engagement through academic instruction, enrichment and extracurricular activities, and individualized support.



Culturally responsive practices, STEAM initiatives, experiential learning, place-based & project-based approaches

Collaboration among educators, families, and community partners, ensures that all stakeholders have a clear understanding of the structures & approaches that make a school successful.

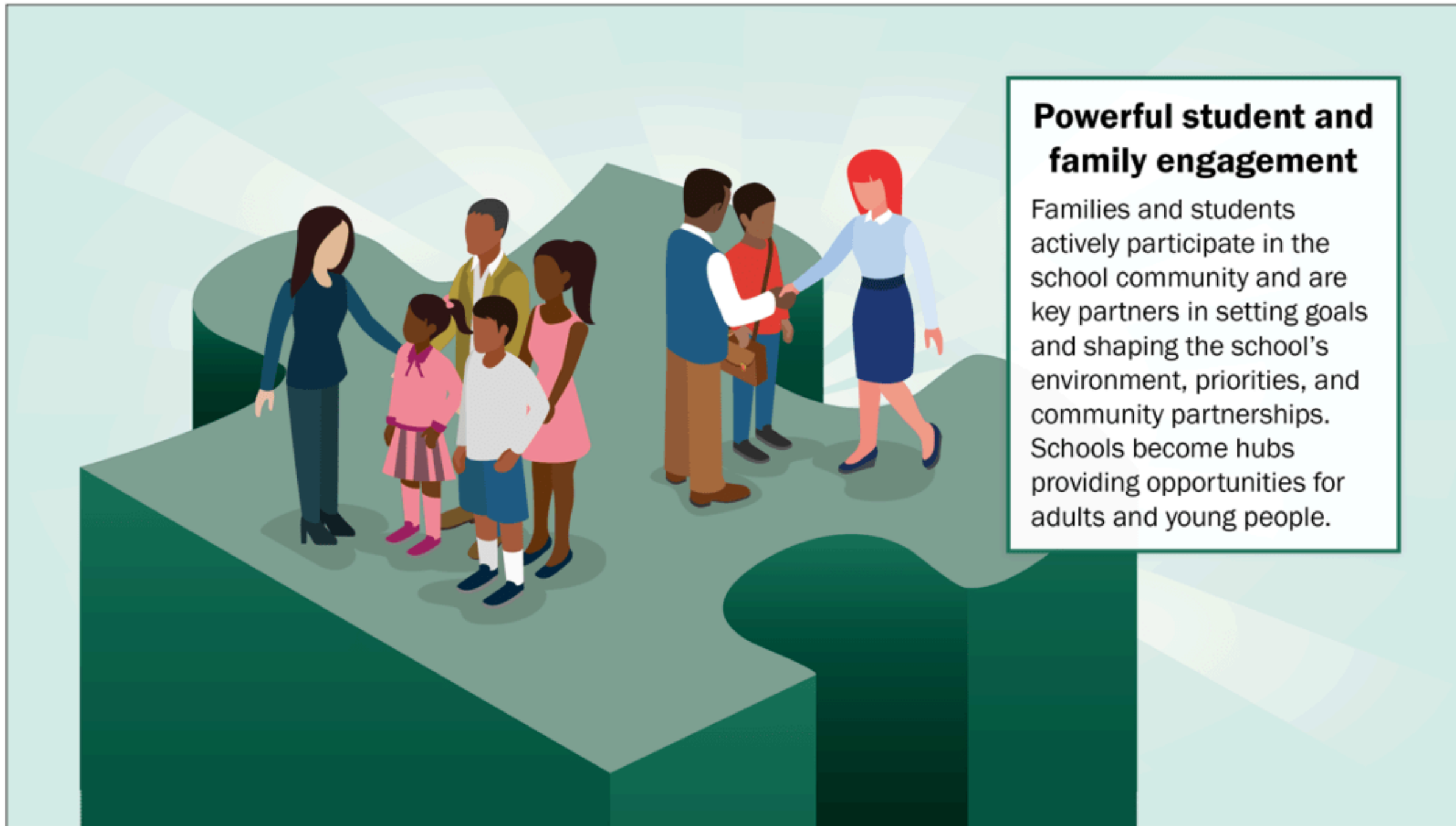
Collaborative leadership teams are equipped to address both the immediate needs of students and the broader systemic challenges that impact education.

This systemic perspective is crucial for creating schools that are adaptable, equitable, and sustainable.

Collaborative leadership, shared power and voice

Families, students, teachers, principals, and community partners co-create a culture of professional learning, collective trust, and shared ownership as they make decisions together through formal structures and through more informal engagement.





Redefines schools as hubs of collaboration & shared purpose

Families/community actively involved in decision-making, governance, and daily operations

Families no longer passive observers but active participants, shaping school's vision and contributing to its success

New level of engagement fosters increase sense of belonging and connection

Integrated systems of support

To foster well-being and a healthy learning environment, a dedicated team of school staff and community partners employ a systemic, assets-based approach to coordinate services, supports, and opportunities.



LEARNING POLICY INSTITUTE
Research. Action. Impact.

LearningPolicyInstitute.org
@LPI_Learn
facebook.com/LearningPolicyInstitute

- Partnership between PPS and Communities in Schools
- Supports PPS with launch & implementation of Community School strategy
 - Data-driven Integrated Supports Model
 - Coaching, Training & Support
 - Funding



**Communities
In Schools**

- CIS AFFILIATES
- SITE COORDINATORS
- COLLABORATIVE PARTNERS



Current Community School, School-wide & Caseload Goals

CLIMATE: INCREASE STUDENT SENSE OF BELONGING OR SENSE OF SAFETY

ATTENDANCE: DECREASING CHRONIC ABSENTEEISM

ACADEMIC: INCREASING READING PROFICIENCY FOR ENGLISH LEARNERS



Community School Site Coordinators



Community School Model

- Philosophical Shift in entire school to support community partnership, voice, shared power, responsiveness
- Not a program
- Staffing Model: Site Coordinator, Family Engagement, Instructional Coach

Communities in Schools Model

- School-wide Needs & Assets Assessments
- School-wide Support Plans & Goals
- Case Management
 - Student Needs Assessments, Goals & Plans
 - Tiered Interventions
- Data Tracking, Monitoring, Analysis, Planning

Wrap-around Services & Site Coordination

Coordination of basic needs: Partnerships, Food, Clothes, Transportation, Mental Health, Shelter, Legal Support, Childcare, etc.

Work in tandem w/ SUN School Site Coordinators & Teams!



PPS Community Schools

(P)K-8 SCHOOLS

Faubion PK-8 School

Cesar Chavez K-8 School

K-5 SCHOOLS

Boise Eliot/Humboldt Elementary School

Chapman Elementary School

Clark Elementary School

Grout Elementary School

James John Elementary School

Kelly Elementary School

Dr. Martin Luther King Jr

Elementary School

Jason Lee Elementary School

Lent Elementary School

Marysville Elementary School

Rigler Elementary School

Rosa Parks Elementary School

Scott Elementary School

Sitton Elementary School

Vestal Elementary School

Whitman Elementary School

Woodlawn Elementary School

Woodmere Elementary School

Next Steps



- Continue to create & foster connections & collaboration w/ community, partners, government officials, etc
- Sustainability & Enduring practices
- Training/support for administrators, site coordinators, schools
- Continued advocacy to district leadership

What stands out to you?

What questions do you have?

thank you

tusind tak
謝謝 dakujem vám
ngiyabongga
dziękuję
merc
baie dankie
धन्यवाद molte grazie
gracias
obrigada
obrigado
teşekkür ederim
tack så mycket
gràcies
tānan
dank u
mahalo
teşekkür edire

suksema
danke